



24 Albert Embankment, London  
SE1

GARTON JONES.COM



24 Albert Embankment, London  
, SE1

GARTON JONES.COM

9 Albert  
Embankment  
London  
SE1 7SP

Sales +44 (0) 20 7735 1888  
nineelms@gartonjones.com  
www.gartonjones.com

## £625,000 Leasehold

A stunning, 1-bedroom apartment of 478sq.ft (44.4sq.m) wit available for sale in The Corniche, a landmark riverside development by St James located on the South Bank. This property comprises an open plan kitchen/dining/reception room with fully fitted interior designed kitchen, a luxury bathroom, bedroom with built-in wardrobes and a spacious utility cupboard providing further storage.

Designed by the internationally acclaimed architectural practice, Foster and Partners, residents of The Corniche will also have exclusive access to a 19th floor Skyline Club Lounge, an extensive health and wellness suite offering spa treatments, a gymnasium with private training facilities and an indoor infinity pool plus a bowling alley and games room, cinema screening rooms and private residents dining space. The Corniche is located a short walk away from the transport links of Vauxhall Station providing easy access into Central London. The London South Bank is also on your doorstep providing a vibrant array of restaurants and bars along the River Thames.

Please note furniture may differ to that shown in the current photos.

- Leasehold: 987 Years Remaining (999 years from 1 January 2013)
- Service Charges: £5,262.44 per annum
- Ground Rent: £500 per annum

- 1 Bedroom
- 478sq.ft (44.4sq.m)
- Open Plan Reception
- Good Storage
- Comfort Cooling
- Residents Gym
- 24 Hour Concierge
- Swimming Pool & Spa Facilities
- 19th Floor Residents Lounge, Bar & Terrace
- Cinema Screening Room & Bowling Alley

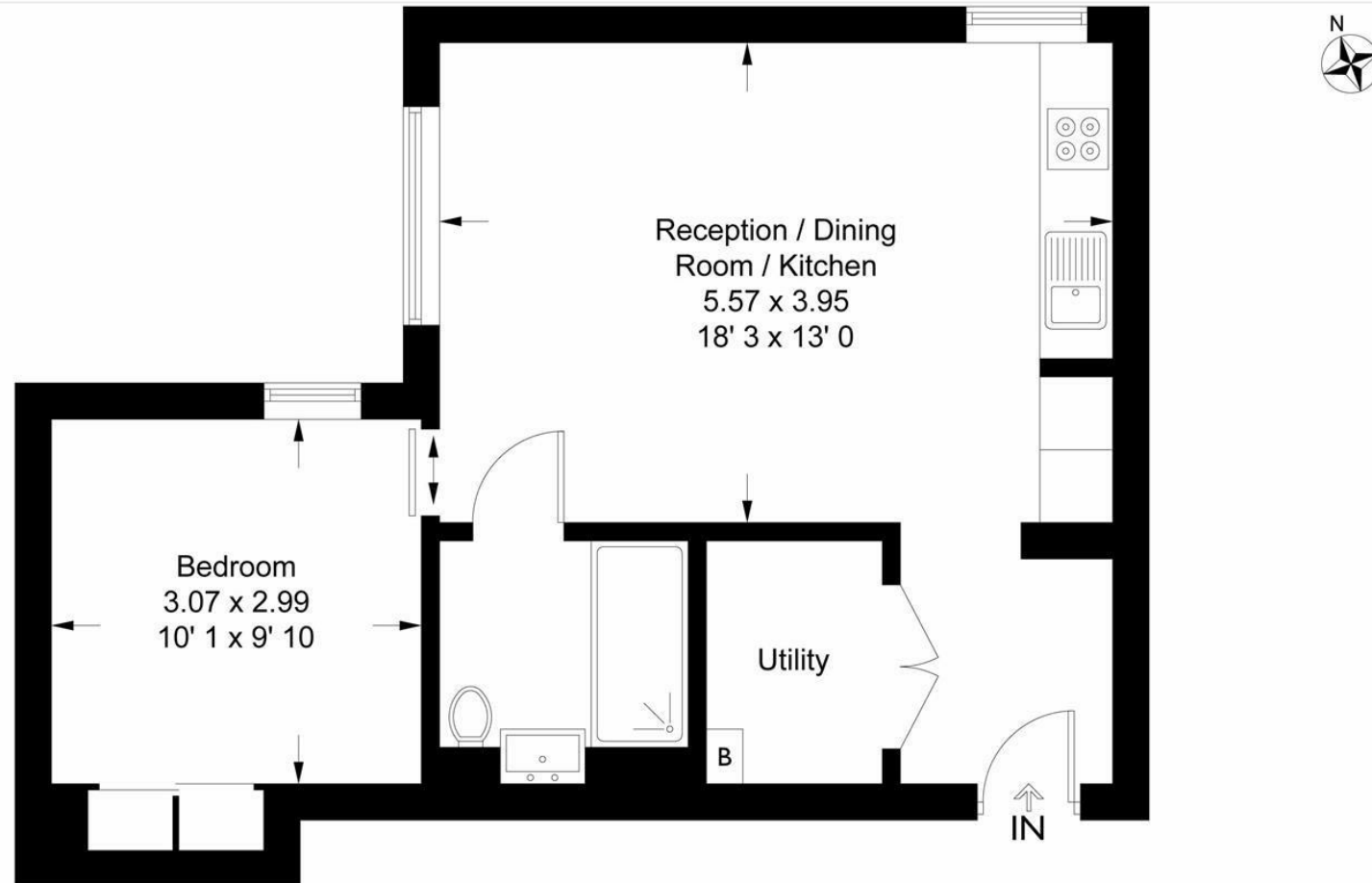


EPC certificate available on request.

## Tower One

Approximate Gross Internal Area = 478 sq ft / 44.4 sq m

GARTON JONES  
LONDON



This plan is not to scale and must be used as layout guidance only. All measurements and areas are approximate and should not be relied upon to provide accurate information. This plan must not be relied upon when making property valuations, design considerations or any other such relevant decisions. We accept no responsibility or liability (whether in contract, tort or otherwise) in relation to any loss whatsoever arising from or in connection with any use of this plan or the adequacy, accuracy or completeness of it or any information within it.





